



PACIFIC

Patricia Urquiola, 2021

The rounded and slightly oversized shapes, the enveloping comfort defined by the total absence of edges and couture details, hark directly back to the laid-back and relaxed atmospheres of the American West Coast of the 1950s.



PACIFIC

Patricia Urquiola, 2021

TECHNICAL INFORMATION

BACKSEAT STRUCTURE

Cold-injected polyurethane foam over internal steel frame. Polyester lining whenever the covers are removable.

SEAT STRUCTURE

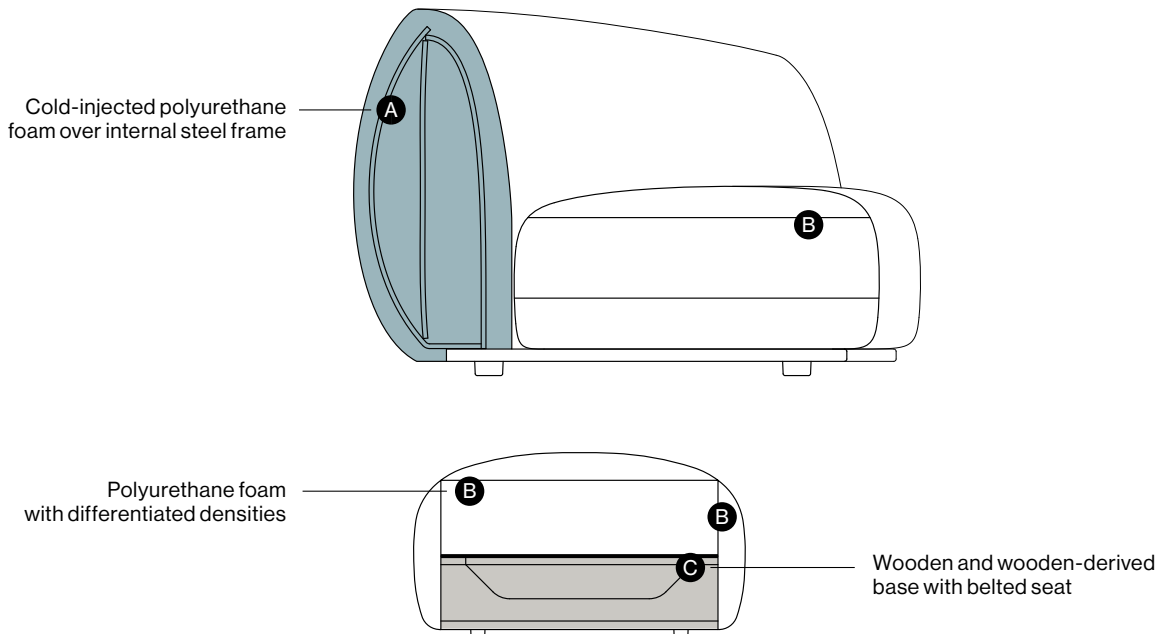
Sofas and armchair: flexible polyurethane foam with differentiated densities. Pouf: wooden and wooden-derived base with belted seat and flexible polyurethane with differentiated densities. Polyester lining whenever the covers are removable.

SEAT HEIGHT

Without applied load: sofas 41 cm, armchair 40 cm, ottoman 38 cm.

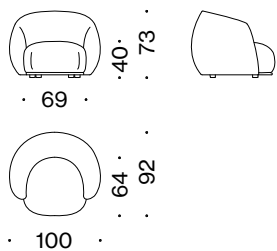
UPHOLSTERY

The Pacific collection covers are removable, exception made for the leather, velvet and vinyl versions. For the recommended fabrics see the table on pages 5-7.



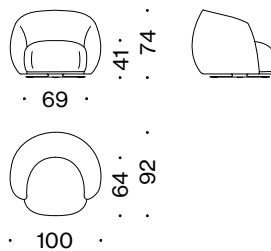
PA1001

Armchair



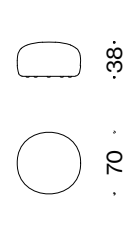
PA10V6

Swivel armchair



PA1017

Ottoman

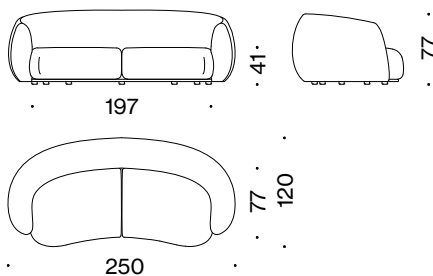


Moroso reserves the right to modify any design and change any technical specifications of any product at any time without prior notice. The drawings do not define the product details; the dimensions reported are indicative and may be subject to change.

CONFIGURATION EXAMPLES

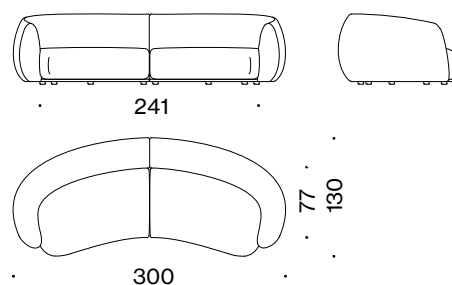
PA1018

2 seater sofa major



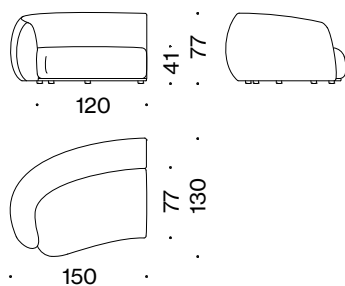
PA1003

3 seater sofa



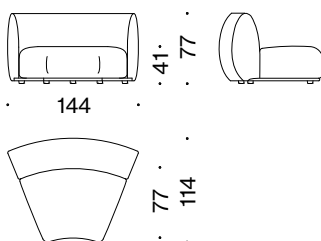
PA1E50

150 Left element



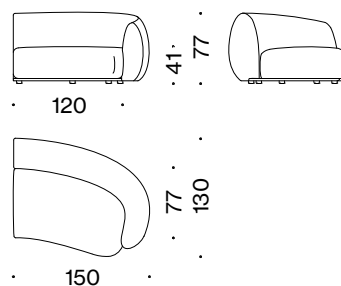
PA1010

Corner



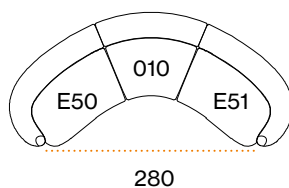
PA1E51

150 Right element



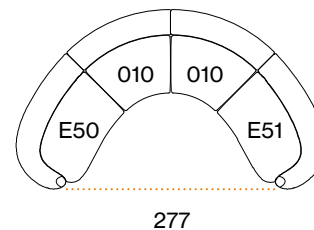
PA1A00

Composition A
(L) 374 x (D) 177 (O) 280cm



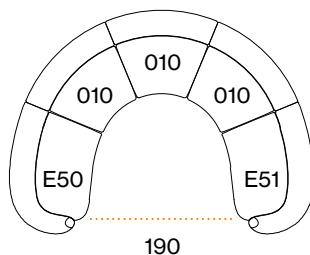
PA1B00

Composition B
(L) 408 x (D) 237 (O) 277cm



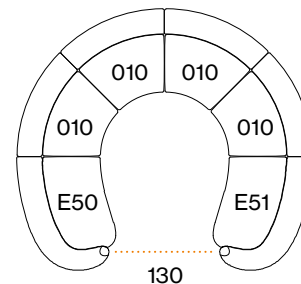
PA1C00

Composition C
(L) 402 x (D) 295 (O) 190cm



PA1D00

Composition D
(L) 390 x (D) 345 (O) 130cm



» (L) lenght, (D) depth, (O) opening

USAGE CATEGORIES

S Soft Use
cosy and natural, with limited wear resistance

DASDIA bouclé
DRIPPING chenille
FURY chenille
LAIDAS woven fabric
LHATI chenille
TRONO bouclé

M Medium Use
robust and durable, easy to maintain

CLUNIS bouclé
DRIPPING velvet
FUZZY bouclé
ORSETTO bouclé
VIEW woven fabric
ZAMPOGNA bouclé

H Heavy Use
high technical values, very robust and durable

ZANZIBAR velvet

BOUCLÉS



S DASDIA

Typology: bouclé
Composition: 45% cotton, 16% viscose, 14% wool, 13% acrylic, 10% linen, 2% polyamide
Height: appr. 140 cm
Abrasion resistance: 35.000 cycles

Hanger: **Toppings**
154 + 155

CAT. **S**

*Check with your Moroso representative to evaluate modifications, additions and available colours.
The use of customer own fabric is possible previous technical verification by the company.*



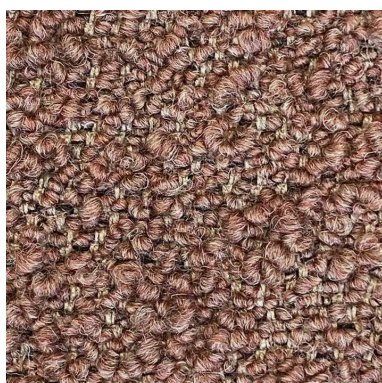
M ORSETTO

Typology: bouclé
Composition: 34% viscose, 33% acrylic, 17% new wool, 8% polyester, 4% linen, 4% cotton
Height: approx. 140 cm
Weight: 940 g/sqm
Abrasion resistance: 50.000 cycles
Rubbing fastness: 5 (dry) 4 (wet)
Colour fastness to artificial light: 5
Pilling resistance: 4

Hanger: **Toppings**
154 + 155

CAT. **S**

*Check with your Moroso representative to evaluate modifications, additions and available colours.
The use of customer own fabric is possible previous technical verification by the company.*



S TRONO*

Typology: bouclé
Composition: 37% viscose, 20% acrylic, 20% new wool, 15% polyester, 5% linen, 3% elastan
Height: approx. 140 cm
Weight: 750 g/sqm
Abrasion resistance: 25.000 cycles
Rubbing fastness: 4-5 (dry) 4 (wet)
Colour fastness to artificial light: 5
Pilling resistance: 4

Hanger: **Forest Wandering**
147 + 148 + 149 +150

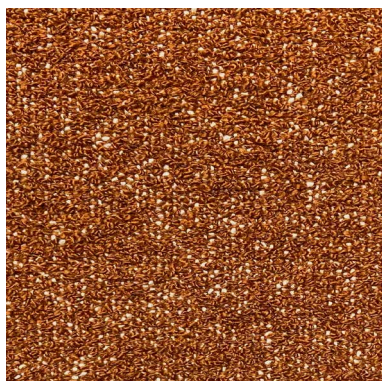
CAT. **W**

*Check with your Moroso representative to evaluate modifications, additions and available colours.
The use of customer own fabric is possible previous technical verification by the company.*

**In the same hanger it is possible to use also the Zampogna fabrics.*

COVERS: Covers must be washed or cleaned according to the instructions reported on the product label. In case of stains, always contact an authorised centre.

DISPOSAL: in order to respect the environment, it is recommended, at the end of the product's life, to separate the various component parts as much as possible and follow the respective recycling, recovery or disposal procedures in accordance with the regulations in force in the countries concerned.



M FUZZY

Typology: bouclé
Composition: 48% viscoso, 36% wool, 13% cotton, 3% polyamide
Height: appr. 140 cm
Weight: 550 g/sqm
Abrasion resistance: 40.000 cycles
Colour fastness to artificial light: 6
Pilling resistance: 4-5

Hanger: **Toppings**
154 + 155

CAT. **W**

*Check with your Moroso representative to evaluate modifications, additions and available colours.
The use of customer own fabric is possible previous technical verification by the company.*



M CLUNIS

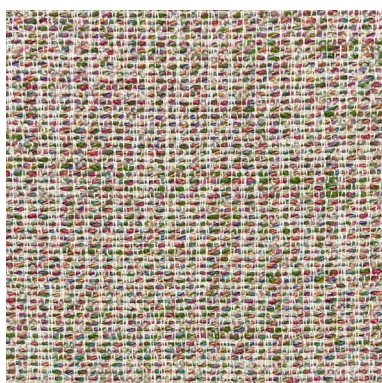
Typology: bouclé
Composition: 33% wool, 25% acrylic, 25% polyester, 15% cotton, 2% polyamide
Height: appr. 137 cm
Abrasion resistance: 40.000 cycles

Hanger: **Toppings**
154 + 155

CAT. **Y**

*Check with your Moroso representative to evaluate modifications, additions and available colours.
The use of customer own fabric is possible previous technical verification by the company.*

WOVEN FABRICS



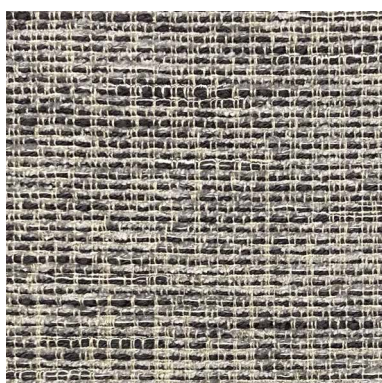
M VIEW

Typology: woven fabric
Composition: 35% cotton, 25% polyester, 14% viscoso, 10% wool, 6% linen, 2% polyamide
Height: appr. 140 cm
Abrasion resistance: 60.000 cycles

Hanger: **Toppings**
154 + 155

CAT. **S**

*Check with your Moroso representative to evaluate modifications, additions and available colours.
The use of customer own fabric is possible previous technical verification by the company.*



S LAIDAS

Typology: woven fabric
Composition: 36% viscoso, 32% polyester, 25% cotton, 7% linen
Height: appr. 140 cm
Abrasion resistance: 25.000 cycles

Hanger: **Toppings**
154 + 155

CAT. **S**

*Check with your Moroso representative to evaluate modifications, additions and available colours.
The use of customer own fabric is possible previous technical verification by the company.*

COVERS: Covers must be washed or cleaned according to the instructions reported on the product label. In case of stains, always contact an authorised centre.
DISPOSAL: in order to respect the environment, it is recommended, at the end of the product's life, to separate the various component parts as much as possible and follow the respective recycling, recovery or disposal procedures in accordance with the regulations in force in the countries concerned.

CHENILLES



S FURY**

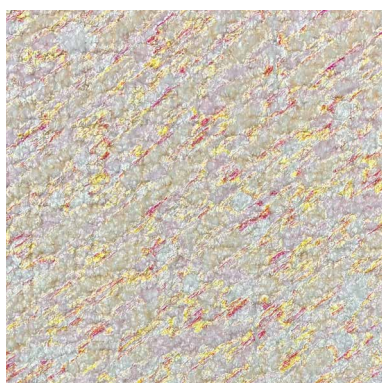
Typology: chenille
Composition: 51% viscose, 40% cotton, 8% linen
Height: approx. 140 cm
Weight: 550 g/sqm
Abrasion resistance: 30.000 cycles
Rubbing fastness: 4-5(dry) 4 (wet)
Colour fastness to artificial light: 6
Pilling resistance: 4-5

Hanger: **Toppings 154**

CAT. **W**

*Check with your Moroso representative to evaluate modifications, additions and available colours.
 The use of customer own fabric is possible previous technical verification by the company.*

.....
***In the same hanger it is possible to use also the Lhati fabrics.*



S DRIPPING

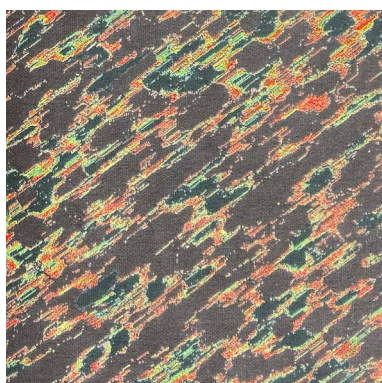
Typology: chenille with 3D printing
Composition: 40% cotton, 20% acrylic, 16% linen, 12% viscose, 8% wool, 4% polyester
Height: approx. 120 cm
Weight: 480 g/sqm
Abrasion resistance: 14.000 cycles

Hanger: **Toppings 155**

CAT. **Y**

*Check with your Moroso representative to evaluate modifications, additions and available colours.
 The use of customer own fabric is possible previous technical verification by the company.*

VELVETS



M DRIPPING

Typology: velvet with 3D printing
Composition: 66% cotton, 31% viscose, 3% polyester
Height: approx. 135 cm
Weight: 315 g/sqm
Abrasion resistance: 40.000 cycles

Hanger: **Velvets and Furs 152**

CAT. **Y**

*Check with your Moroso representative to evaluate modifications, additions and available colours.
 The use of customer own fabric is possible previous technical verification by the company.*



H ZANZIBAR

Typology: velvet
Composition: 100% mohair (base: cotton)
Height: approx. 140 cm
Weight: 575 g/sqm
Abrasion resistance: 80.000 cycles
Rubbing fastness: 4-5 (dry) 4-5 (wet)
Colour fastness to artificial light: 5
Pilling resistance: 4-5

Hanger: **Velvets and Furs 152**

CAT. **Z**

*Check with your Moroso representative to evaluate modifications, additions and available colours.
 The use of customer own fabric is possible previous technical verification by the company.*

.....
COVERS: Covers must be washed or cleaned according to the instructions reported on the product label. In case of stains, always contact an authorised centre.
DISPOSAL: in order to respect the environment, it is recommended, at the end of the product's life, to separate the various component parts as much as possible and follow the respective recycling, recovery or disposal procedures in accordance with the regulations in force in the countries concerned.



Moroso Spa
via Nazionale 60
33010 Cavallico,
UD - Italy
T +39 0432 577 111
info@moroso.it
moroso.it